



Pere Marquette Oaks

PMO RESIDENTS:

WE ARE MAKING AN EFFORT TO AID OUR LAWN CARE PROVIDERS AND IMPROVE THE GENERAL APPEARANCE OF OUR PARK. BELOW WE HAVE PROVIDED SOME EXAMPLES OF “DO’S” AND “DON’TS” TO EXPLAIN THE MOST COMMON PROBLEM AREAS.

MAKING THESE LANDSCAPE CHANGES WILL GREATLY REDUCE THE RISK OF DAMAGE TO UTILITIES AND MAKE IT EASIER FOR OUR LAWN CARE PROVIDER TO DO THEIR JOB.

“DON’TS”



EXPOSED WATER LINES WITHIN GRASS WILL NOT BE TRIMMED BY OUR LAWN CARE PROVIDER. THESE AREAS WILL NEED TO BE TRIMMED BY THE OWNER.



EXPOSED ELECTRICAL BOXES WITHIN GRASS WILL NOT BE TRIMMED BY OUR LAWN CARE PROVIDER DUE TO RISKS OF DAMAGE TO POWER SOURCES AND POSSIBLE INJURY TO THE OPERATOR.



YARD DECORATIONS WILL NOT BE TRIMMED OR CLOSELY CUT AROUND BY OUR LAWN CARE PROVIDER DUE TO POTENTIAL DAMAGE.



UN-PROTECTED TREE BASES OR SHRUBS CREATE A DIFFICULT AREA TO CUT OR TRIM. OVER TIME THIS CAN POSSIBLY DAMAGE THE TREE OR SHRUB AND REDUCE ITS LIFE SPAN.

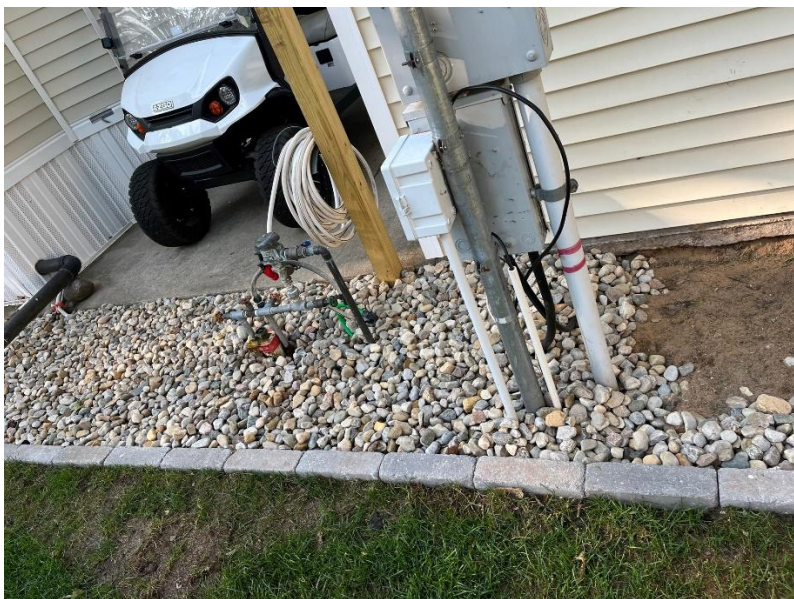


OUT BUILDINGS WITH GRASS GROWING UP TO STRUCTURE WILL NOT BE TRIMMED DUE TO POSSIBLE DAMAGE BY TRIMMER. TRIMMING WILL BE THE RESPONSIBILITY OF THE OWNER

DO'S



PROVIDE AN AREA
AROUND SHEDS TO
ALLOW OUR LAWN
CARE PROVIDER A CLEAR
AREA TO CUT AND TRIM
WITHOUT DAMAGE TO
STRUCTURES



CREATE A CLEAN AND WEED FREE AREA AROUND UTILITIES. THIS WILL ELMINATE THE RISK OF DAMAGE OR INJURY



CREATING A LANDSCAPED BARRIER AROUND TREE OR SHRUB BASES WILL ALLOW OUR LAWN CARE PROVIDER TO CUT OR TRIM WITHOUT DAMAGE

LANDSCAPE ISSUES TO KEEP IN MIND:

- OUR LAWN CARE PROVIDER USES 60” MOWERS. THE DISTANCE BETWEEN YOUR LANDSCAPING AND OTHER OBJECTS NEEDS TO BE LARGE ENOUGH TO PROVIDE PASSAGE OF A MOWER
- UN-PROTECTED HOSES AND POWER CORDS MAY BE DAMANGED
- DOG CHAINS AND ANCHORS NEED TO BE REMOVED BEFORE LAWN CARE DAY. THIS IS USUALLY TUESDAY OF EACH WEEK. THE ACTUAL DAY MAY VARY DUE TO WEATHER CONDITIONS.
- THERE SHOULD BE NO SOLAR LIGHTS IN LAWNS UNLESS THEY ARE REMOVED EACH WEEK BEFORE GRASS CUTTING

COMMON AREA RULES:

- COMMON AREAS AND EASMENT AREAS WILL BE MOWED BY OUR LAWN CARE PROVIDER
- TRIMMING AROUND PERSONAL DECORATIONS OR LANDSCAPE WILL BE THE RESPONSIBILITY OF THE LOT OWNER.

SITE PLANNING APPROVAL PROCESS:

1. SEND A SKETCH OF YOUR LANDSCAPING IDEAS TO THE SITE PLAN REVIEW COMMITTEE
2. THE SITE PLAN REVIEW COMMITTEE WILL REVIEW YOUR IDEAS AND MAKE ANY SUGGESTIONS BEFORE APPROVAL

CONTACT A MEMBER OF THE SITE PLAN REVIEW COMMITTEE IF YOU REQUIRE HELP WITH YOUR LANDSCAPING CHANGES/PROJECTS

ALL MATERIALS COSTS WILL BE THE RESPONSIBILITY OF THE OWNER